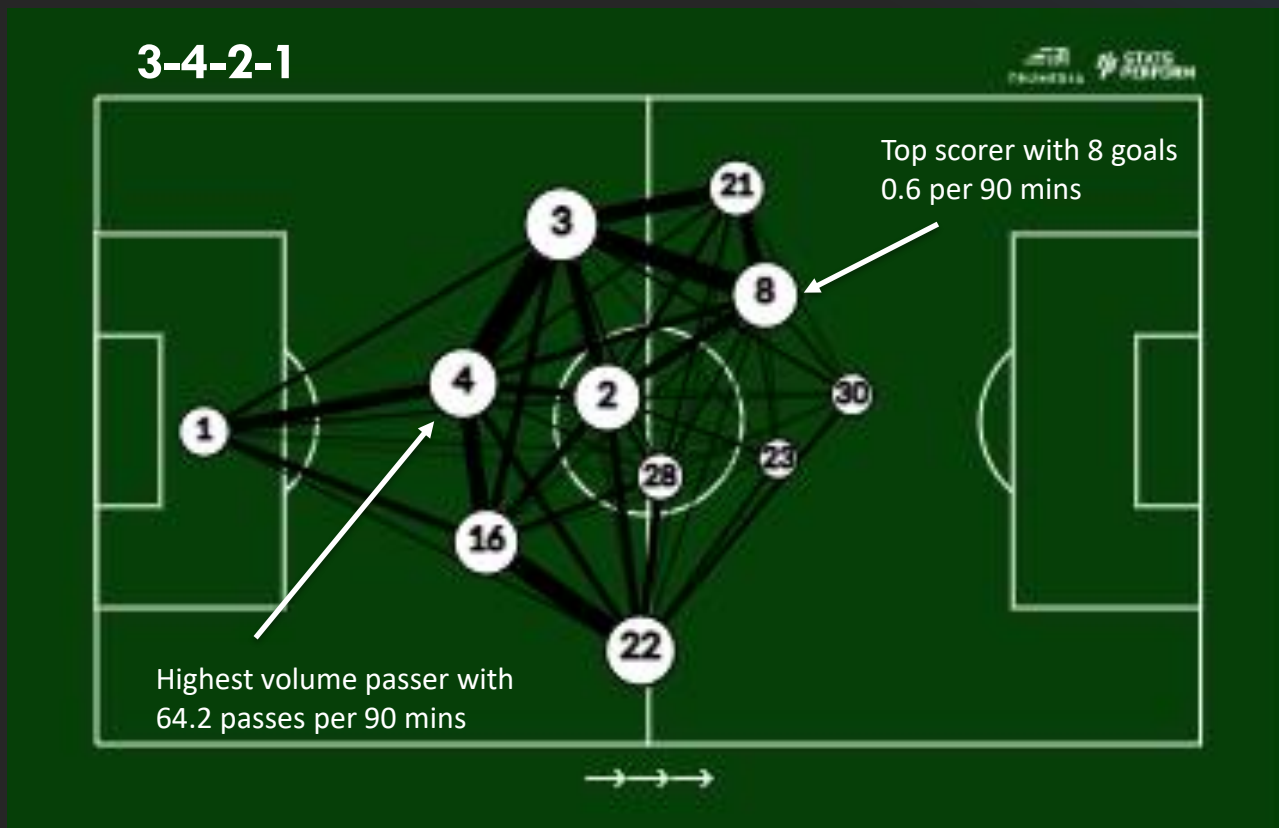




CF Montréal

Pre-Game Technical Report

CF Montréal: Passing Network & Average Team Shape



1. S. Breza (GK) 3. K. Miller (LCB) 4. R. Camacho (CB)
16. J. Waterman (RCB) 21. L. Lappalainen (LWB) 2. V. Wanyama
(LCM) 7. A. Hamdi (RCM) 22. A. Johnson (RWB) 8. D. Mihailovic
(AML) 10. J. Torres (AMR) 30. R. Quinto (CF)

Key;
GK | Defense | Midfield | No. 10's | Striker

Of the 13 MLS games Montréal have played in so far this season the 3-4-2-1 formation shown in the passing network, right, is the one they have used in 8 of them and the most used.

The back three are the highest volume for total touches in the team in 2022 with LCB Miller having 911, CB Camacho 817 and RCB Waterman having 717. RWB Johnson has had 301 more touches than LWB Lappalainen. Mihailovic, playing in the left sided no. 10 position has had 740 touches and this links nicely into one of the most significant passing lanes for Montréal which is LCB Miller passing to Mihailovic (231 combinations in total, the second highest combination in the team), a passing lane that is vital to the way they play.

Montréal have averaged 52.3% possession this season which ranks them 10th in the MLS for this statistic. Their pass completion percentage is currently at 83.2% which ranks them 5th.

CF Montréal In-Possession Analysis



Starting Passing Sequence Zones



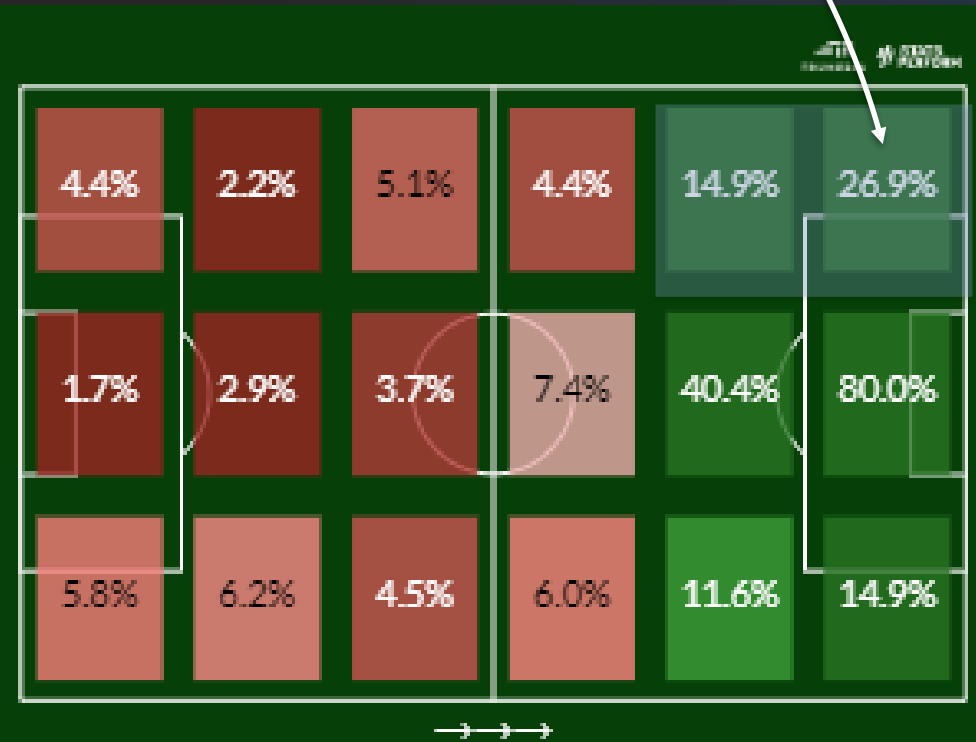
Given Montréal like to play with a lot of width it isn't a surprise to see that their build up sequence zones on both flanks are very similar especially in these specific areas.....

Below is a graphic showing the percentages of those passing sequences that end up in a shot and the results back up the fact that the two flanks, especially deep in the final third, see a high volume of shot ending sequences with 26.9% stemming from the left-hand side.

Ending Passing Sequence Zones



...and so, it makes sense that the end zones of their sequences do end further up the pitch and in the final third as the continuation of progressing the ball up the pitch in wide areas is a key aspect of their style of play and this is the case here. Overall, they do tend to favor the left-hand side over the right.



CF Montréal: Focus on build up in wide areas



Montréal's style of play and game plan is mainly to utilize their build up by using the wide areas as much as possible and this clip shows this up perfectly.



As soon as they have won the ball back here it is noticeable that straight away, they look to play down the right-hand flank and although there is a brief turnover by Salt Lake Montréal win the ball back again and immediately switch the play to LWB Lappalainen on their favored left-hand side, but they find that route is blocked and so switch the play again this time out to the right-hand side however the ball once again soon finds itself back out on the left with Lappalainen. Eventually a shot comes in but is well wide.

In Summary:
They massively favor the left flank and always seem to work the ball out to this side of the pitch.

Turnover of possession → Initial right sided wing play → Switch of play to favored left side

CF Montréal: Threat from wide areas examples



This clip shows a second example of Montréal's build up play down the left-hand side and this time this clip shows them in a slower type of build up.



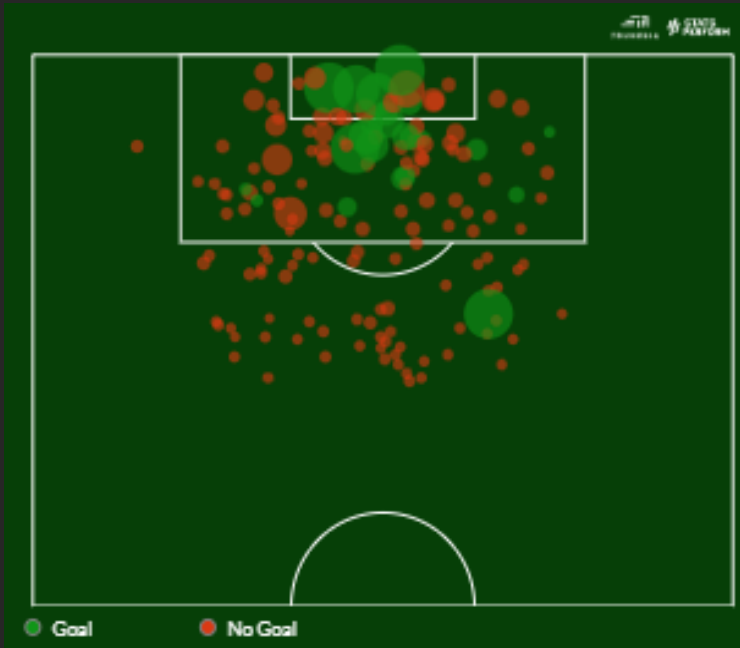
This clip is slightly different from the previous one because in this one Montréal are in the process of a slower build up phase but also, they are trying to create an overload down the left and at one point they succeed in creating a 2 v 1 situation but fail to follow it through and Atlanta get numbers back on the edge of their 18-yard box and regain possession of the ball. They will try to do this on occasion, but it isn't one of their great strengths.

In Summary:

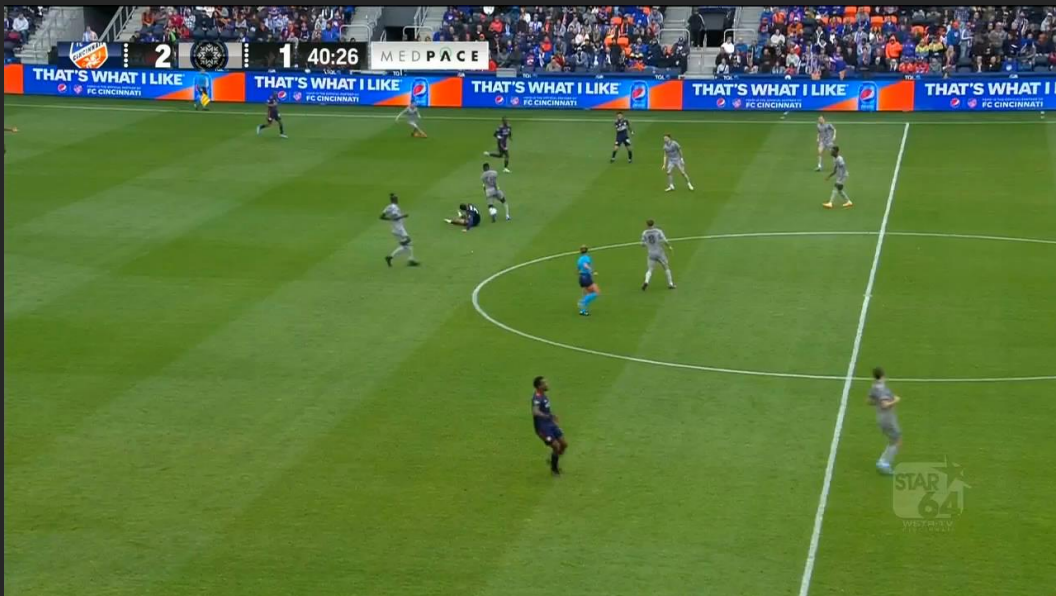
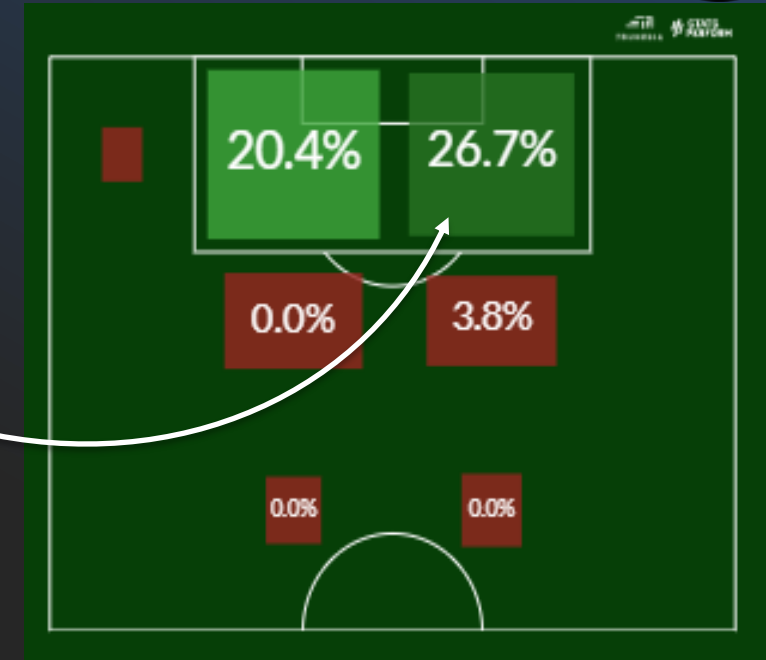
They may try to create overloads in wide areas, but this is more of a threat on the counter and not in the slower more general build up phases.

Build from the back → Midfield support play when ball is out wide → Attempt an overload

CF Montréal: Shooting Analysis



- Montréal are currently scoring at a rate of 1.85 goals per 90 minutes and therefore are out-performing their xG per 90 of 1.58.
- Their current shots on target percentage stands at 38.7% with 4.62 shots hitting the target from 11.92 per 90 minutes.
- Torres, who plays in the AMR position for Montréal, is ranked joint 3rd for shots on target and this may go some way at least to explaining a higher percentage on this right side of the 18-yard box.
- Mihailovic' timing of runs into the box should be monitored closely as this clip shows perfectly.

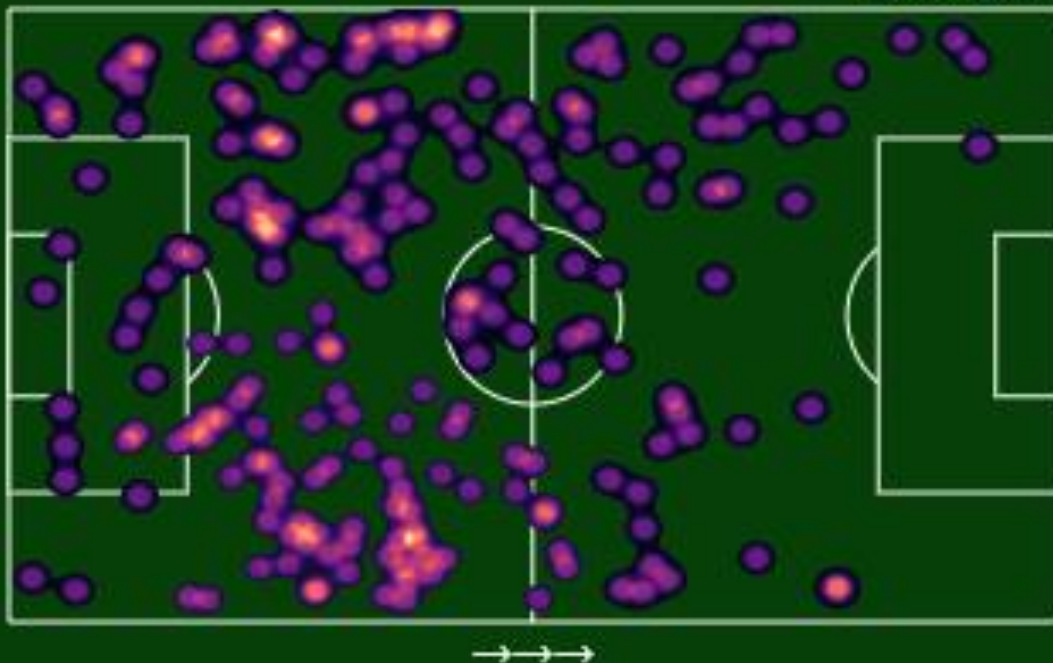


Player	Shots	Shots On	Goals	xG
Mihailovic (AML)	22	14	7	3.89
Quioto (CF)	21	10	3	4.24
Kamara (CF)	15	5	3	1.63
Torres (AMR)	15	5	3	2.12

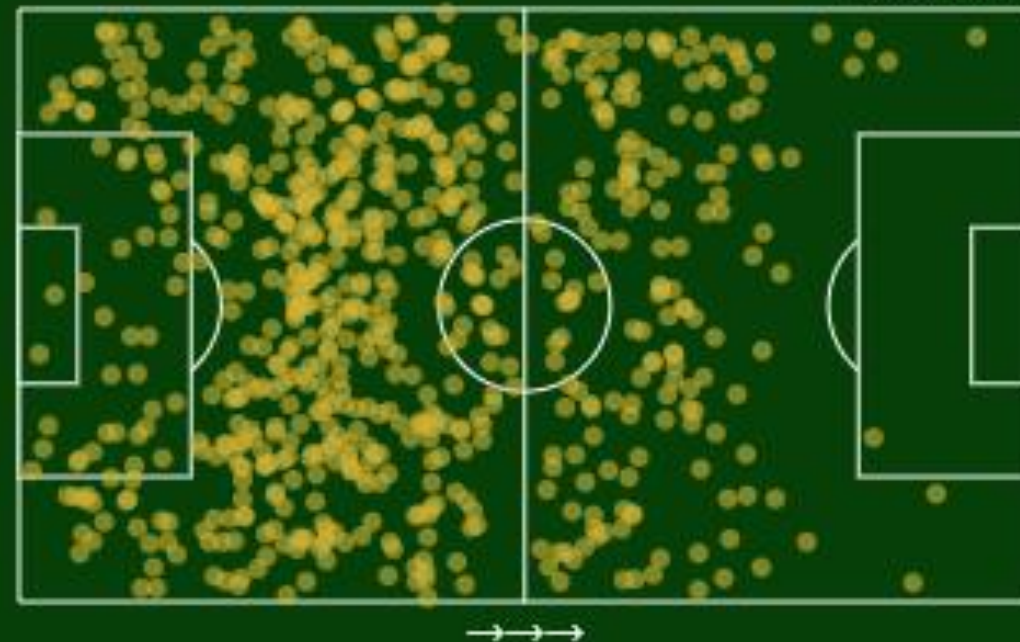
CF Montréal: Defensive Activity



Tackle & Interception Locations



Ball Recoveries



Montréal have not played with a back four all season long and they either set up in a 3-4-3 or the more common 3-4-2-1 shape they have employed most recently. Due them having a back five out of possession the tackle and interception heatmap is systematic of that defensive shape with the defensive activity mainly occurring in wide areas and this is because the opposition are being forced out into these areas where Montréal are reasonably stronger and have numbers to defend with.

The ball recovery location graphic is again a representation of this defensive shape, but a slight difference can be seen here with a lot of ball recoveries happening in the deeper parts of the middle third.

CF Montréal: Out of possession shape



Montréal do not employ a low block of any kind in fact quite the opposite. They like to employ a high pressing strategy with not only the front two pressing but LCM Mihailovic joining them to almost form a pressing front three (an example of this can be seen in this clip).

Montréal's shape in this game against Real Salt Lake was a 5-1-2-2 out of possession with a back five, Wanyama as the DM, Mihailovic & Hamoudi as the MF two and Torres and Quioto as the front two.

They will look to press the opposition CB's especially if they are spread wide and playing in a back four, but they will then back off from the press when the ball is passed through that first line of the press and into their midfield.

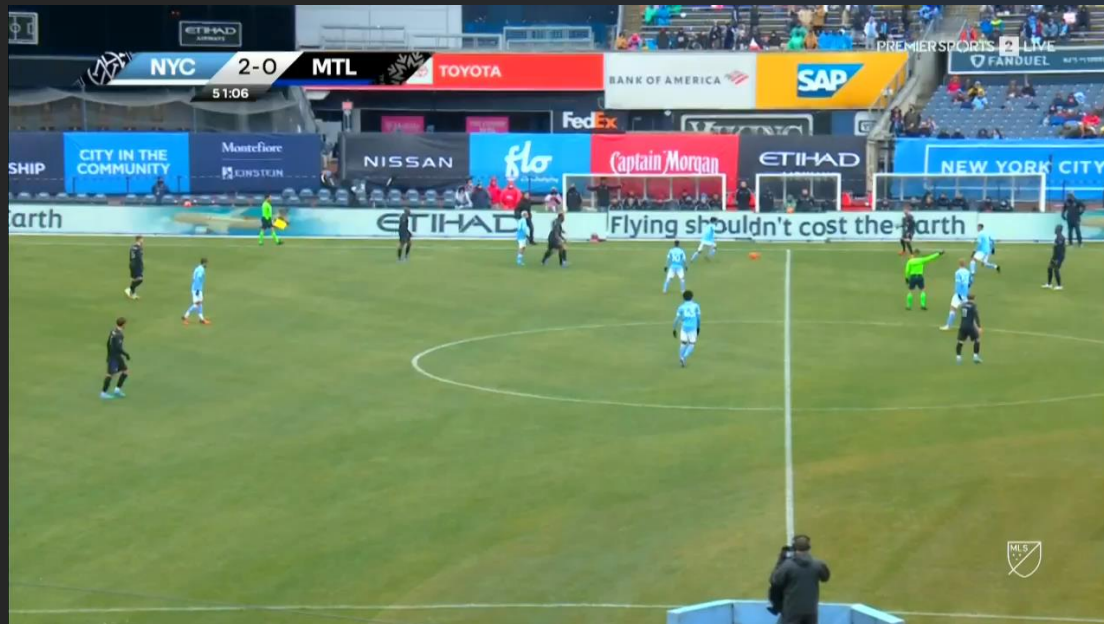
CF Montréal: How do they create chances?



Player Focus Djordje Mihailovic



Mihailovic is an attacking midfielder and a real threat in the attacking phases of Montréal's play. He times his runs into the box well, is technically very adept with the ball at his feet making key passes, through balls creating 25 chances so far this season so far.

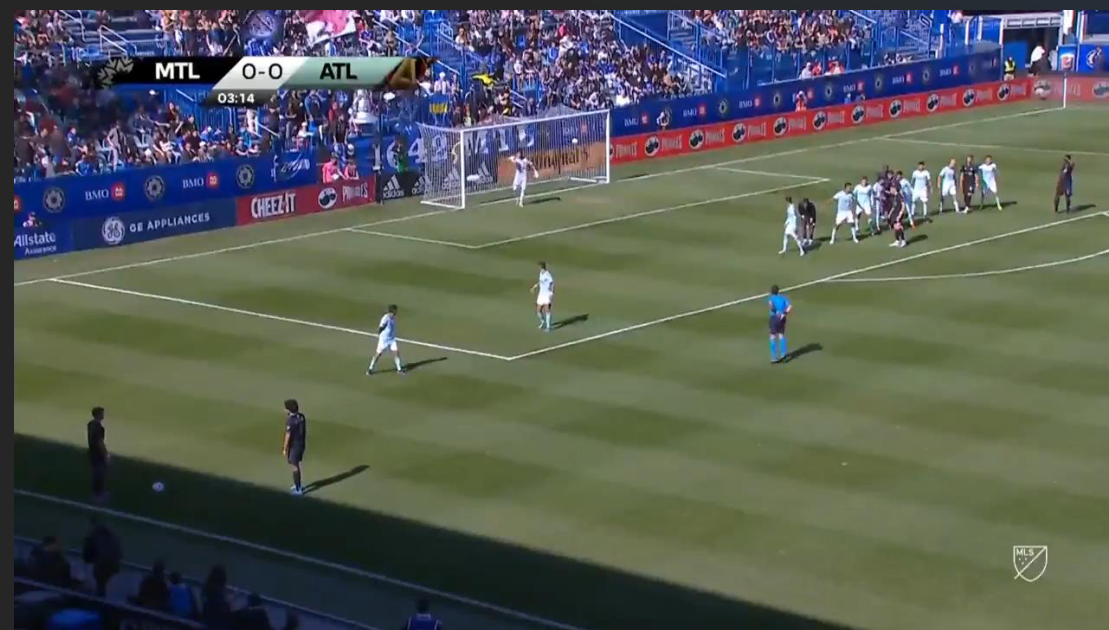


He has 4 assists from an xA of 2.22 this season and 7 goals from an xG total of 3.89 so he is over-performing both metrics by a significant margin, especially the latter.

In this clip his not only is his ball carrying, ability at pace, a nightmare for the NYCFC defenders to deal with but he is able to pick out a pass for his tem-mate to score from.

Mihailovic has a very good set piece delivery in him, and this clip shows him delivering a free kick from outside the box right onto his team-mate's head which he duly heads home from.

He is a threat from these types of situations so conceding free kicks in these sorts of areas are probably best avoided if possible.

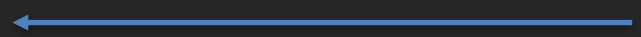
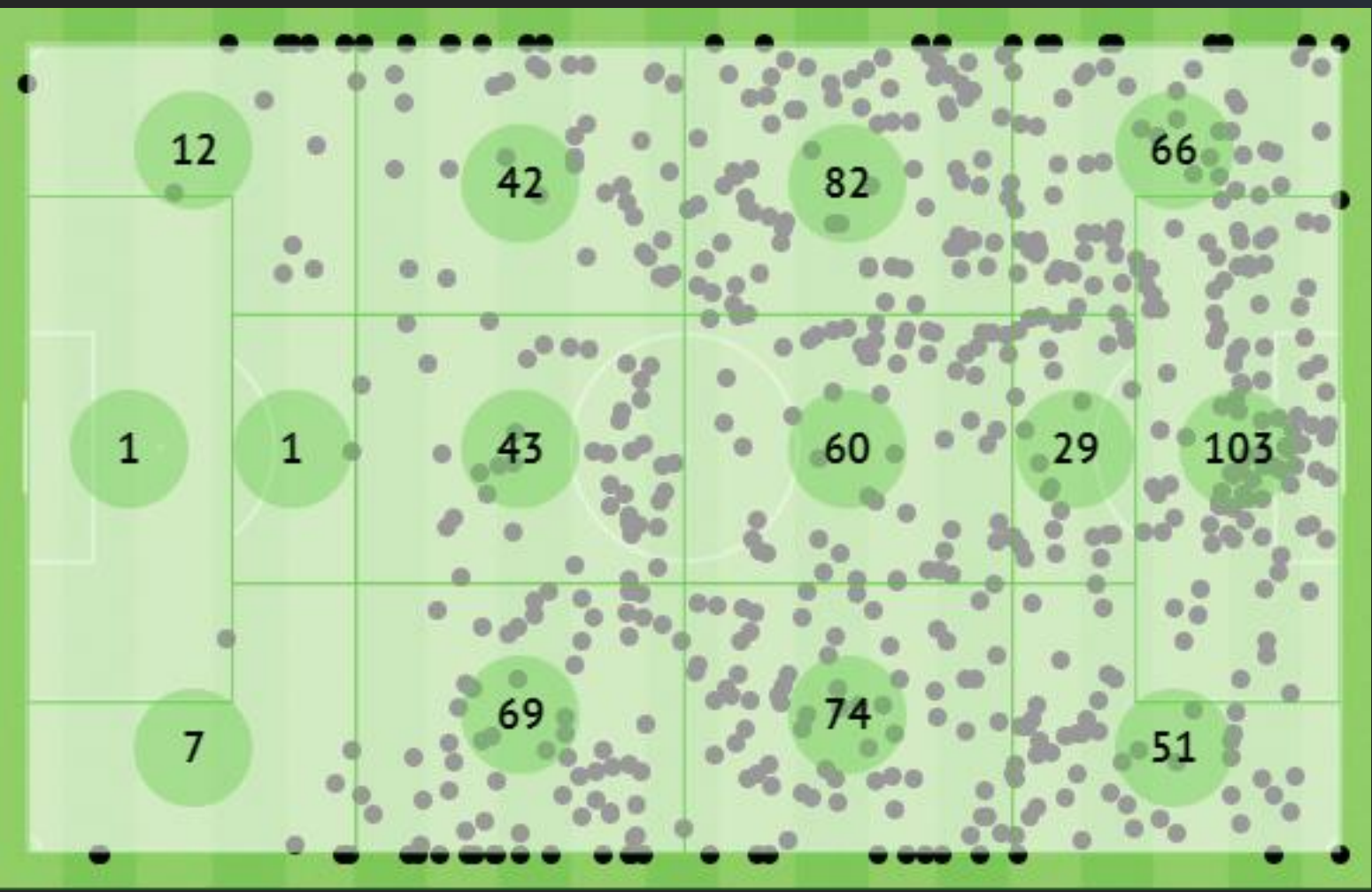


CF Montréal:

Where on the pitch do they lose the ball?



As previously mentioned earlier in this report Montréal do not tend to revert to a back 5 out of possession, they still try to keep 3 at the back with the wing backs 10 yards higher engaging their opposite number so essentially keeping the shape so they have a springboard to attack with. To that end, and although they do not use a low block, judging by the graphic shown here they are losing the ball mainly in these wing back areas when in possession and that is visible on the graphic shown here with a lot of possession lost in the wide areas and especially down the left-hand side where it has been confirmed in this report Montréal tend to use most often.



Direction of play